

Characterization of Tomato-associated Rhizobacteria Recovered from Various Tomato-growing Sites in Tunisia

Nada Ouhaibi-Ben Abdeljalil^{1,2*}, Jessica Vallance^{3,4}, Jonathan Gerbore⁵, Emilie Bruez^{3,4}, Guilherme Martins⁶, Patrice Rey^{3,4} and Mejda Daami-Remadi²

¹Higher Agronomic Institute of Chott-Mariem, Sousse University, 4042-Chott Mariem, Tunisia

²UR13AGR09-Integrated Horticultural Production in the Tunisian Centre East, Regional Centre of Research on Horticulture and Organic Agriculture, University of Sousse, 4042, Chott-Mariem, Tunisia

³INRA, UMR1065 Santé et Agroécologie du Vignoble (SAVE), ISVV, F-33140 Villenave d'Ornon, France

⁴Université de Bordeaux, Bordeaux Sciences Agro, ISVV, UMR1065 SAVE, F-33140 Villenave d'Ornon, France

⁵BIOVITIS, 15400 Saint Etienne de Chomeil, France

⁶USC Oenologie-INRA, Université Bordeaux Segalen, Bordeaux Sciences Agro, ISVV, Villenave d'Ornon, France

Abstract

In the present study, a total of 200 rhizobacterial isolates were obtained from rhizosphere of healthy tomato plants grown in fields with a history of severe soilborne diseases and mainly crown and root rots. Screened their capacity to suppress *in vitro* growth of *Sclerotinia sclerotiorum* and *Rhizoctonia solani*, 69 and 57 isolates out of the 200 tested were shown able to inhibit significantly the mycelial growth of target pathogens by 11-62% relative to control. The 25 most effective isolates, leading to suppression of both fungi by more than 45% over control, were selected and subjected to morphological, biochemical, molecular, and metabolic characterizations. This collection of tomato-associated rhizobacteria exhibited a great morphological and biochemical diversity. Sequencing of 16S rRNA and *rpoB* genes led to the identification of four genera namely *Bacillus*, *Chryseobacterium*, *Enterobacter*, and *Klebsiella*. The most frequent species were *B. amyloliquefaciens*, *B. thuringiensis*, *B. megaterium*, *B. subtilis*, *E. cloacae*, *C. jejuense*, and *K. pneumoniae*. Screening for their plant growth-promoting properties, 20 isolates were shown able to produce siderophore, 18 had solubilized phosphate, and 19 were capable to synthesize indole-3-acetic acid (IAA). PCR amplification of lipopeptide biosynthetic genes revealed the presence of genes encoding fengycin A and bacillomycin D biosynthesis in 18 and 16 isolates, respectively. Metabolic characterization performed using Biolog™ Ecoplates indicated that tomato-associated rhizobacteria displayed a large metabolic activity and they were able to use a wide range of carbon sources with the increase of the incubation duration. Based on their metabolic profiles, these rhizobacterial isolates were grouped into eight major clusters generated at the different sampling times (24, 48 and 120 h of incubation). Average well-color development (AWCD) values were found to be positively correlated with the Shannon diversity index.

Keywords: Antifungal activity; Characterization; Diversity; Identification; Rhizobacteria; Tomato; Tunisia

Introduction

Tomato (*Solanum lycopersicum* L.) is one of the most widely grown vegetable crop worldwide and is ranked second after potato [1]. In Tunisia, tomato is a strategic crop but unfortunately threatened by various bioaggressors and mainly soilborne fungi due to the practice of monocropping and the lack of crop rotation due to the limited producing areas [2-5]. Moreover, the widely grown tomato cultivars were susceptible to soilborne diseases and especially to Rhizoctonia Root Rot caused by *Rhizoctonia solani* and Sclerotinia Stem Rot induced by *Sclerotinia sclerotiorum*. These pathogens are responsible for damping-off and/or collar, stem and roots rots and eventually plant death leading to serious yield losses both under greenhouse and open field growing systems [6,7]. They survive in soil either as sclerotia or as mycelium in crop debris [8]. Currently, few fungicides are effective in controlling these serious pathogens but even when allowed, chemical tools still involve technical, environmental and toxicological risks [9]. Moreover, it is very difficult to protect tomato plants from crown and root rot diseases using fungicides only particularly when the crown zone was covered with dense plant foliage. Such issues have encouraged research efforts on new, effective, and eco-friendly alternative methods such as biocontrol [10].

Several microorganisms have been reported as effective biocontrol agents (BCA) for suppression of plant diseases caused by soilborne pathogens [11-13]. A particular interest was attributed to root-associated bacteria which displayed interesting antagonistic potential towards *Rhizoctonia* spp. [14]. Plant growth promoting rhizobacteria

(PGPR) produce various types of antifungal metabolites, including antibiotics and siderophores, capable of reducing or suppressing infection by pathogenic fungi in several pathosystems [15,16]. Furthermore, rhizobacteria have received particular attention because of their excellent root colonizing ability and their ability to produce a wide range of antifungal metabolites and auxins such as indole-3-acetic acid or IAA [17-19].

Due to the limited knowledge in Tunisia on the nature of native tomato-associated rhizobacteria and their ability to suppress root rot diseases in tomato, the main objectives of the present study were i) to isolate bacterial isolates from tomato rhizosphere and to assess their ability to suppress the *in vitro* growth of *S. sclerotiorum* and *R. solani*, ii) to identify and characterize the most effective ones in suppressing both pathogens, and iii) to assess their potential to produce antifungal and plant growth-promoting compounds.

***Corresponding author:** Ouhaibi-Ben Abdeljalil N, UR13AGR09-Integrated Horticultural Production in the Tunisian Centre-East, Regional Center of Research on Horticulture and Organic Agriculture, University of Sousse, 4042, Chott-Mariem, Tunisia, Tel: +21673327543; Fax: +21673327070; E-mail: nadouhaibi@hotmail.fr

Received May 11, 2016; Accepted May 20, 2016; Published May 23, 2016

Citation: Abdeljalil NOB, Vallance J, Gerbore J, Bruez E, Martins G, et al. (2016) Characterization of Tomato-associated Rhizobacteria Recovered from Various Tomato-growing Sites in Tunisia. J Plant Pathol Microbiol 7: 351. doi:10.4172/2157-7471.1000351

Copyright: © 2016 Abdeljalil NOB, et al. This is an open-access article distributed under the terms of the Creative Commons Attribution License, which permits unrestricted use, distribution, and reproduction in any medium, provided the original author and source are credited.

Materials and Methods

Soil sampling and processing

Tomato-associated rhizobacteria were isolated from the rhizospheric soils of apparently healthy and vigorous tomato plants grown in various fields and greenhouses with a history of severe soilborne diseases. Surveys concerned different tomato-growing sites namely Kairouan, Sidi Bouzid, Cap-Bon, Sahline and Chott-Mariem regions (Table 1). Soil samples were removed from the top layer (15-20 cm deep) using a small shovel. Each soil sample was placed in a separate plastic bag before being brought to the laboratory and processed.

Bacterial isolation and culture

A subsample of 1 g was taken from each air-dried soil sample and homogenized in 10 mL SDW. The obtained soil suspension was shaken at 150 rpm at 25°C for 24 h. The resulting sludge was filtered and serially diluted four times (10^{-1} to 10^{-4}), and 0.1 ml of each diluted suspension was injected in a separate Petri dish containing 10 ml of molten Levan Peptone Glucose Agar (LPGA) and stirred well before medium solidification.

After 2 to 3 days of incubation at 28°C, distinct individual developing bacterial colonies were selected based on of their macro morphological diversity and picked separately onto Nutrient agar (NA) medium. Purification was performed by streaking out each distinct type of colony on NA in a separate plate and grown during 48 h at 28°C before being used for characterization bioassays. Stock cultures were stored at -20°C in Nutrient Broth (NB) medium supplemented with 15% glycerol.

Assessment of antifungal potential of collected rhizobacteria

R. solani and *S. sclerotiorum* isolates used for the assessment of the antifungal potential of the collected rhizobacterial isolates was originally recovered from naturally infected tomato plants exhibiting typical Rhizoctonia Root Rot and Sclerotinia Stem Rot symptoms, respectively. Fungal cultures were gratefully provided by the Plant Pathology Laboratory at the Regional Centre of Research on Horticulture and Organic Agriculture of Chott-Mariem, Tunisia. They were grown onto Potato Dextrose Agar (PDA) medium supplemented with streptomycin sulfate (300 mg/L w/v) and incubated at 25°C during 5 days before use.

A total of 200 rhizobacterial isolates was collected from the different

Geographical location	Growing region	Crop type and number of samples		Cropping system
		Protected	Open field	
Cap Bon	Korba	-	5	Conventional
	Takelsa	5	-	
Centre	Chebika (Kairouan)	-	10	Conventional
	Sidi Ali Ben Salem	-	5	
	Regueb (Sidi Bouzid)	-	5	
Centre-Ouest	Regueb (Sidi Bouzid)	-	5	Conventional
Sahel Centre-East	Chott-Mariem	5	-	Organic
	Sahline	5	-	Conventional
	Téboulba	5	-	Conventional
	Ouardanine	5	-	Conventional
	Békalta	5	-	Conventional
	Ouled chamekh	5	-	Conventional
Total	-	35	25	

Table 1: Origin and number of soil samples used for isolation of tomato-associated rhizobacteria.

sampling sites. They were evaluated for their antifungal activity against both target pathogens using the dual culture technique. Agar plugs (5 mm in diameter), removed from 5-day old cultures, were plated at one side of a Petri plate containing PDA. From a 48 h -old culture, 10 μ L of bacterial cell suspension (10^8 CFU/mL) were injected into a well (5 mm in diameter) performed at the opposite side using a sterile cork borer. Plates challenged with pathogen plugs only were used as control. Each individual treatment was replicated thrice. The whole experiment was repeated twice.

Plates were incubated at 28°C for 5 days. The diameter of target pathogen colony was measured and the percentage of growth inhibition was calculated using the following formula [20]:

$$GI(\%) = \frac{(C-T) \times 100}{C}$$

where I: Percent growth inhibition; C: Colony diameter of the target pathogen in control plates; T: Colony diameter of the target pathogen dual cultured with rhizobacterial isolates.

A growth inhibition score (GIS), estimated based on GI values, was attributed to each rhizobacterial isolate tested using an arbitrary 0-5 scale where 0 = no inhibition, 1 = GI 1- 15%; 2 = GI 16- 35%; 3 = GI 36-45%; 4 = GI 46-65%, and 5 = GI \geq 66%.

The most effective 25 isolates in suppressing growth of both pathogens by more than 45% (GIS estimated at 4 and more) will be selected for further investigations.

Characterization of selected rhizobacterial isolates

To explore the diversity of tomato-associated rhizobacteria, the selected 25 bacterial isolates were subjected to various characterizations.

Morphological and biochemical characterization

Morphology of bacterial colonies was characterized based on various traits such shape, elevation, surface, margin, color, and pigmentation. This macro-morphological characterization was performed, following Patel et al. [21] protocol, on bacterial cultures previously grown for 48 h on NA medium and incubated at 28°C.

The biochemical traits considered in the present study were the Gram staining, levan activity, catalase activity, oxidase activity, and ability to produce fluorescent pigment on King's B medium (KB) [22]. Results of these tests were scored as positive or negative.

Characterization for plant growth-promoting traits

Siderophore production: Bacterial isolates were grown on NA medium for 48 h at 28°C. Siderophore production was assessed by spot inoculation of bacterial isolates onto the Chrome Azurol S (CAS) agar medium. Control plates were spot treated with SDW only. Plates were incubated at 28°C for 5 days. Development of yellow-orange halos around the growing colonies indicated positive siderophore production as indicated by Shobha and Kumudini [23]. The halo diameter was measured and compared to the untreated control.

Phosphate solubilization: Phosphate solubilization ability of isolates was assessed qualitatively using a modified Pikovskaya's agar medium containing tricalcium phosphate according to Venkadesaperumal et al. [24] method. Briefly, each bacterial culture was spot inoculated in the centre of a Petri plate and incubated at 28°C for 7 days. Control plates were treated with SDW only. Clear halo zones formed around colonies indicate positive Phosphate solubilization activity.

Indole-3-Acetic Acid (IAA) production: Production of the phytohormone indole-3-acetic acid (IAA) by the selected isolates was assessed using Ghodsalavi et al. [25] protocol. Briefly, each bacterium was grown onto NB and incubated at 28°C for 48 h in an incubator-shaker at 170 rpm. Then, 50 µL of each bacterial liquid culture were transferred to NB containing 50 µg/mL of L-tryptophane. After 48 h of incubation, the bacterial suspensions were centrifuged at 10000 rpm for 10 min. About 1 mL of supernatant was mixed with 4 mM of Salkowski reagent (1 mL 0.5 M FeCl₃ and 50 mL of 35% HClO₄) [26]. Reagent mixed with SDW was used as control. After 30 min of incubation, the inoculated reagents that turned red indicate that the tested isolate is an IAA-producing agent.

Characterization of the hypersensitive reaction: The tomato-associated rhizobacteria isolated were also screened for their hypersensitive reaction (HR) on tobacco leaves. Each isolate was suspended in SDW and the concentration of the cell suspension was adjusted to 10⁸ cells/mL using a hemocytometer. The bacterial suspension was injected into tobacco leaves. Leaves injected with *Pseudomonas syringae* pv. *tomato*, a phytopathogenic bacteria, were used as positive controls and others injected with SDW only were considered as negative control. Bacteria with positive reaction i.e. causing the development of necrotic area 24 h after injection were ranked as pathogenic and therefore excluded from any further investigation on their antagonistic potential as suggested by Nawangsih et al. [27].

Metabolic characterization: Metabolic characterization of the 25 bacterial isolates was performed using the Biolog® system. Among the 31 substrates present in triplicate, 10 contained carbon and nitrogen (including six amino-acids), 2 composed of carbon and phosphorus and 19 with only carbon. Bacterial cells were recuperated after centrifugation at 3000 rpm during 30 min at 15°C. The pellet cells were resuspended in 15 mL of 0.85% NaCl solution. About 150 µL of the obtained bacterial cell suspension were dropped in each well of the Biolog® EcoPlates as indicated in Renault et al. work [28]. The plates were incubated at 28°C in darkness. The rate of substrate use was indicated by the reduction of the tetrazolium, a redox indicator dye turning from colorless to purple. The color development was determined at 590 nm with Microlog-System Release 4.0 software absorbance after 24 h, 48 h and 120 h incubation.

Microbial response in each microplate, expressed through average well-color development (AWCD), was determined according to Gomez et al. [29] using the following formula:

$$AWCD = \sum OD_i / 31$$

where OD_i is the optical density in each well, corrected by subtracting the water blank well (inoculated but without any carbon source). The reading for each well was then corrected by subtracting the values of the water blank for a given replicate, and standardized by dividing by AWCD for that replicate as indicated in Garland and Mills [30].

If OD_{ijt} represents the corrected optic density for well for replicate j at time t, then the AWCD for replicate j at time t is given as follows:

$$AWCD_{jt} = \frac{1}{31} \sum_{i=1}^{n31} OD_{ijt}$$

The standardized OD values are determined as follows:

$$\overline{OD}_{ijt} = \frac{OD_{ijt}}{AWCD_{jt}}$$

The Shannon diversity index (H), which was commonly used to characterize species diversity within a microbial community [8,30], was calculated to assess the diversity of the 25 rhizobacterial isolates using the following Chojniak et al. [31] formula:

$$H = -\sum (P_i \times \ln P_i)$$

where P_i is the proportional optical density value of each well.

The relationships among different samples on the basis of the transformed data were determined using Principal Component Analysis (PCA) according to Grove et al. [32]. This technique allowed projection of the original data onto new axis (principal components) thus, reflecting any intrinsic pattern in the multidimensional data group [30].

Molecular identification and detection of antibiotic producing genes

DNA was extracted from pure cultures grown in NB using the Invisorb Spin Plant Mini Kit (Invitex) according to manufacturer's instructions. The DNA extracts were then quantified with a nanodrop (ND-1000, ThermoScientific, Labtech) and homogenized at a concentration of 10 ng/µL.

Bacterial isolates were first identified by 16S rDNA sequence analysis, amplified with the universal primers 799f/1492r. For distinction of isolates belonging to *Bacillus* genus, two other genes were sequenced i.e. *rpoB* and *gyrB*. Also, all isolates were screened for 5 antibiotic-producing genes i.e. 4 fengycins (A, B, D, and E), and one gene encoding bacillomycin D biosynthesis (Table 2).

The 8 genes were amplified under the same PCR conditions. Briefly, each PCR mixture contained 2 µL of extracted DNA (10 ng/µL), 1 µL of MgCl₂ (50 mM), 0.6 µL of dNTP (10 mM), 0.6 µL of each primer (10 ng/µL), 3 µL Bovine Serum Albumine (10 µg/µL) (BioLabs), 0.1 µL of Taq polymerase (SilverStar DNA polymerase, Eurogentec), 3 µL of PCR buffer (10X) and 19.7 µL of SDW in a total volume of 30 µL.

PCR amplification reactions were performed in a Mastercycler Gradient thermocycler (Eppendorf) using De Clerck and De Vos method [33]. The following cycling conditions were used: initial

Primer name	Sequence	Amplicon size	Annealing
		(pb)	Temperature (°C)
799f	AACMGGATTAGATACCCCKG	400	52
1492r	GTTACCTTGTACGACTT	400	52
rpoB-f	GACGATCATYTWGGAACCG	500	52
rpoB-r	GGNGTYTCRATYGGACACT	500	52
gyrB-f	AAAACAACCRATTCATGAAG	500	52
gyrB-r	TCGCTTCACTATTYCCAAGT	500	52
FENA1F	GACAGTGCTGCCTGATGAAA	757	54
FENA1R	GTCGGTGCATGAAATGTACG		
FENB1F	CAGCCGCTGTCAACAAGATA	950	54
FENB1R	ACACGACATTGCGATTGGTA		
FEND1F	TTTGGCAGCAGAGAAGTTT	964	53
FEND1R	GCTGTCCGTTCTGCTTTTTT		
FENE1F	GCCAAAAAGAAACGAGCAAG	756	53
FENE1R	GTCGGAGCTAACGCTGAAAC		
BACC1F	GAAGGACACGGCAGAGAGTC	814	60
BACC1R	CGCTGATGACTGTTCATGCT		

Table 2: Pairs of primers used for identification of tomato-associated rhizobacteria and detection of antibiotic biosynthesis genes.

denaturation of 5 min at 94°C followed by 30 cycles of denaturation (1 min at 94°C), annealing of primers (45 s at 52°C), elongation (1 min at 72°C) and a final elongation for 8 min at 72°C. Amplified fragments were purified and sequenced by GATC Biotech (Germany). For species level identification, sequences were compared with the Genbank database using the BLAST program (<http://blast.ncbi.nlm.nih.gov/Blast.cgi>) [34]. Then, sequences were deposited in the Genbank database for getting the accession numbers.

Statistical analysis

Mean colony diameters of each target pathogen depending on bacterial treatments tested (200 isolates and untreated control) were analyzed using one-way analysis of variance according to a completely randomized design. Means were separated using the Duncan's Multiple Range test at ($P \leq 0.05$). Based on growth inhibition records relative to control, isolates were ranked into different classes as previously described and the number of isolates within each class was determined. Data analyses were performed using SPSS version 16.0 and each individual treatment was replicated thrice.

Results

Assessment of the antifungal potential of tomato-associated rhizobacteria towards *Rhizoctonia solani* and *Sclerotinia sclerotiorum*

All the 200 bacterial isolates collected were screened for their antifungal potential against two tomato fungal pathogens namely *S. sclerotiorum* and *R. solani* using the dual culture method. Their effects on pathogen colony diameter were compared to the untreated control. ANOVA analysis, performed for each target pathogen, revealed that mean colony diameter, noted after 5 days of incubation at 25°C, varied significantly (at $P \leq 0.05$) depending on bacterial treatments tested (collected isolates and control). In fact, 69 isolates out of the 200 tested had significantly inhibited by 11.11 to 62.22% the mycelial growth of *S. sclerotiorum* relative to the untreated control (data not shown). Based on growth inhibition scores (GISs) exhibited toward *S. sclerotiorum*, 155 isolates were ranked within class 1 indicating that their relative percentages of growth inhibition were less than 15%. However, interestingly, 27 isolates led to more than 45% decrease in pathogen growth and were, thus, ranked within class 4 (Figure 1).

As for *R. solani*, mycelial growth was significantly lowered by 11.85 to 61.48%, compared to the untreated control, when dual cultured with 57 isolates. Data shown in Figure 1 indicated that when assessed toward *R. solani*, 151 isolates had inhibited by less than 15% pathogen growth versus control and were thereafter ranked within class 1 but, interestingly, more than 45% decrease in pathogen radial growth was achieved using 36 isolates.

The most effective 25 rhizobacterial isolates against both targeted pathogens and ranked with class 4 were selected for further identification and characterizations.

Morphological and biochemical characterization of tomato-associated rhizobacteria

Based on their macro-morphological traits on NA medium, the selected isolates exhibited a great diversity color in their color (white, transparent, cream, light yellow), shape and texture as shown in Table 3.

The results of biochemical characterizations indicated also a large diversity in their biochemical traits. In fact, among the collected rhizobacteria, 18 isolates out of the 25 tested were Gram positive and the remaining ones were Gram negative. The oxidase activity (oxidase +) was detected in 15 isolates and 2 were oxidase +/- . The majority of isolates (22/25) were Levane - and 3 were Levane +/- . Catalase positive activity (catalase +) was detected in 17 isolates while 5 exhibited catalase +/- and the remaining isolates gave negative reaction. It should be also mentioned that all the isolates tested did not produce fluorescent pigments in King's medium B; this result indicated the absence of *Pseudomonas fluorescens* within the bacterial collection subjected to this chemical characterization (Table 3).

Molecular identification of tomato-associated rhizobacteria

In the present study, molecular identification of 25 isolates was performed using the 16S rRNA and *rpoB* gene sequences. Based on 16S rRNA gene sequencing, the results revealed that the collected isolates belonged to different genera; the sequence analysis of 16S rRNA (alignment on 700 pb) obtained for *Bacillus* sp. was similar to each other and did not allow evident distinction at the species level although the fragments revealed more than 98% similarity. In fact, as shown in Table 3, among the 25 isolates tested, 20 were identified as

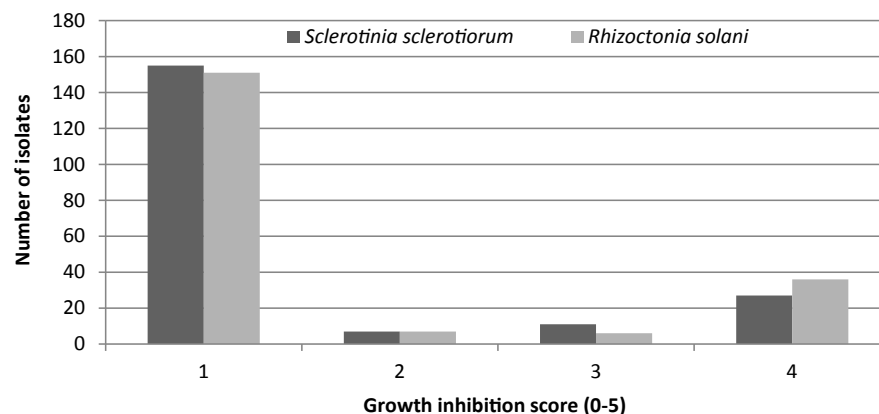


Figure 1: Number of tomato-associated rhizobacterial isolates and their repartition into four growth inhibition classes depending on their relative ability to suppress the *in vitro* growth of *Sclerotinia sclerotiorum* and *Rhizoctonia solani* using the dual culture method. Growth inhibition score was estimated based on growth inhibition (GI) percentage calculated using Prashar et al. [20] formula using an arbitrary 0-5 scale where 0 = no inhibition, 1= GI 1- 15%; 2 = GI 16- 35%; 3 = GI 36-45%; 4 = GI 46-65%, and 5 = GI \geq 66%.

Molecular identification			Morphological characterization	Biochemical characterization				Detection of antibiotic biosynthesis genes		PGPR traits		
Isolate	Similarity (%)	Accession No.	Colony morphology	Gram	Oxidase	Catalase	Levan	Fen A	Bac D	IAA	P. Solubilization	Siderophore production (halo diameter in mm)*
<i>Bacillus megaterium</i> B1	99	KU168423	White, flat, opaque	-	+	+	-	-	+	+	-	48.3
<i>B. thuriangiensis</i> B2	99	KU158884	White, flat, opaque	+	+	+	-	-	+	+	+	31.7
<i>Enterobacter cloacae</i> B3	99	KT923049	White, flat, opaque	-	-	+	-	+	-	+	+	55.0
<i>E. cloacae</i> B4	100	KT923050	Transparent, flat, Translucide	-	-	+	+/-	+	+	+	+	50.0
<i>B. megaterium</i> B5	100	KT923054	Transparent, flat, Translucide	-	+/-	+	+/-	+	-	+	+	45.0
<i>B. subtilis</i> B6	100	KT921427	White, convex, translucide	+	-	+	-	+	+	-	+	0.0
<i>B. amyloliquefaciens</i> B7	99	KT921428	White, flat, opaque	+	-	+	-	+	+	+	-	83.3
<i>B. subtilis</i> B8	99	KU158885	White, flat, opaque	+	+	+	+/-	+	+	+	+	35.0
<i>B. amyloliquefaciens</i> B9	100	KU158887	Transparent, convex, opaque	+	+	-	-	+	+	+	+	36.7
<i>B. subtilis</i> B10	99	KT921327	Light yellow, flat, opaque	+	+	+	-	+	+	+	+	90.0
<i>Chryseobacterium jejuense</i> B11	99	KU158886	White, convex, translucide	+	-	-	-	-	+	+	+	43.3
<i>Klebsiella pneumoniae</i> B12	99	KT921328	Transparent, convex, translucide	-	-	+	-	+	-	+	+	90.0
<i>B. amyloliquefaciens</i> B13	99	KT951658	Transparent, convex, translucide	+	+	+/-	-	+	-	+	+	36.7
<i>B. subtilis</i> B14	99	KU161090	White, flat, opaque	+	+	+/-	-	+	-	-	-	73.3
<i>B. amyloliquefaciens</i> B15	99	KT923051	White, plate, opaque	+	+	+/-	-	-	+	-	-	28.3
<i>E. cloacae</i> B16	100	KT921429	Cream, flat, opaque	-	-	+	-	+	+	+	+	90.0
<i>B. subtilis</i> B17	100	KT923055	White, flat, opaque	+	-	+	-	+	+	+	+	0.0
<i>B. amyloliquefaciens</i> B18	100	KT923052	White, plate, opaque	+	+	-	-	+	+	+	+	0.0
<i>B. subtilis</i> B19	99	KT921430	Cream flat, opaque	+	+	+/-	-	+	-	-	-	75.0
<i>B. subtilis</i> B20	99	KT921431	White, plate, opaque	+	+	+	-	+	+	+	+	66.7
<i>B. amyloliquefaciens</i> B21	100	KT923047	Transparent, plate, translucide	+	+	+	-	+	+	+	+	0.0
<i>B. amyloliquefaciens</i> B22	100	KT923053	White, plate, opaque	+	+	+	-	+	+	+	+	0.0
<i>B. thuriangiensis</i> B23	99	KT923056	White, plate, opaque	+	+	+	-	+	+	+	+	13.3
<i>B. megaterium</i> B24	100	KT923048	Cream, flat, opaque	-	+	+	-	-	+	-	-	75.0
<i>B. subtilis</i> B25	99	KU161091	Transparent, flat, Translucide	+	+/-	+/-	-	-	+	-	-	10.0

Table 3: Molecular, morphological and biochemical characterization of tomato-associated rhizobacteria and assessment their ability to produce lipopeptide antibiotics and plant growth-promoting compounds. Positive reaction (+); Negative reaction (-); Fen A : Fengycin A, Bac : Bacillomycin D, IAA: Indole-3- acetic acid, P.solubilization: Phosphate solubilization. All isolates were negative for hypersensitive reaction (HR) on tobacco leaves, and they were negative for the detection of Fengycin B, D and E. *: Average diameter of orange halo of the siderophore production by rhizobacteria. PGPR: Plant growth promoting rhizobacteria.

belonging to the genus *Bacillus*, three as being *Enterobacter cloacae*, one as *Chryseobacterium jejuense* and one as *Klebsiella pneumoniae*.

Unlike the level of sequence similarity noted between *Bacillus* isolates using the 16S rRNA gene sequencing, *rpoB* gene sequences showed more variation and were used to identify isolates at the species level. In fact, the *rpoB* amplicons were of approximately 400 bp in length and the sequence similarity of the collected isolates and the bacterial sequences available at the Gene Bank ranged from 99 to 100%. Based on comparison of the partial sequences using BLAST, 3 isolates (B1, B5 and B24) were identified as *B. megaterium*, 9 isolates (B2, B6, B8, B10, B14, B17, B19, B20, and B25) were affiliated to *B.*

subtilis, 7 isolates (B7, B9, B13, B15, B18, B21 and B22) were attributed to *B. amyloliquefaciens*, and one isolate (B23) was determined as being *B. thuriangiensis*.

Sequences of the isolates, used in the present study, were submitted to the GenBank and their relative accession numbers are cited in Table 3.

Detection of antibiotic biosynthesis genes

To determine whether the collected tomato-associated rhizobacteria have the potential to produce different types of antimicrobial lipopeptides, PCR amplifications were performed to

detect genes responsible for fengycin (A, B, D and E) and bacillomycin D biosynthesis. Among the 5 primer pairs tested, 2 genes encoding fengycin A and bacillomycin D biosynthesis were detected. Among the 25 isolates screened using FENA1F/FENA1R primer pairs, 18 yielded the indicative presence of *fenA* gene involved in fengycin A biosynthesis. Screened using BACC1F/BACC1R primer pairs, 16 isolates were found to be bacillomycin D-producing agents (Table 3 and Figure 2).

After sequencing the antibiotic biosynthesis genes, the results showed that the gene encoding the enzymes of fengycin A production does not distinguish several different haplotypes within the tested collection of isolates and the obtained sequences were aligned on 757 pb. However, the gene encoding bacillomycin D biosynthesis allowed the discrimination of 3 different haplotypes (13 isolates attributed to the same haplotype and 2 having a distinct haplotype, namely B15 (6 mutations) and B22 (10 mutations) (Figure 2).

Data given in Table 3 also indicated that among the rhizobacterial isolates screened for peptide synthetase biosynthetic genes of fengycin A and bacillomycin D, 20 were able to produce at least one of these antibiotics and 15 isolates were shown able to produce both fengycin A and bacillomycin D.

Screening of plant growth-promoting traits

In vitro assays were performed to select bacterial isolates exhibiting

interesting plant growth-promoting characteristics. Isolates were screened for siderophore production, IAA production and phosphate solubilization. Data given in Table 3 revealed that 20 out of the 25 isolates naturally associated with tomato plants were found able to produce siderophore on CAS medium agar plates. *B. subtilis* B10 (KT921327), *E. cloacae* B16 (KT921429) and *K. pneumoniae* B12 (KT921328) isolates produced the largest halo on CAS medium agar, reaching 90 mm in diameter, followed by *B. amyloliquefaciens* B7 (KT921428), *B. megaterium* B24 (KT923048), and *C. jejuense* B11 (KU158886) forming halos of 83.33, 75, and 43.33 mm in diameter, respectively.

When screened for their phosphate solubilization ability on PVK agar, 18 isolates out of 25 tested were shown capable to solubilize phosphate as given in Table 3. Also, most of the tested bacterial isolates (19/25) had produced the plant growth-promoting hormone i.e. indole-3-acetic acid (IAA) (Table 3).

It can be concluded through whole analysis of PGPR traits data given in Table 3 that all screened collected bacterial isolates, originally recovered from rhizosphere of apparently healthy and vigorous tomato plants, showed positive response to at least one PGPR trait (siderophore, IAA production or phosphate solubilization) and that interestingly, 13 and 6 strains showed positive result for three and two traits, respectively.

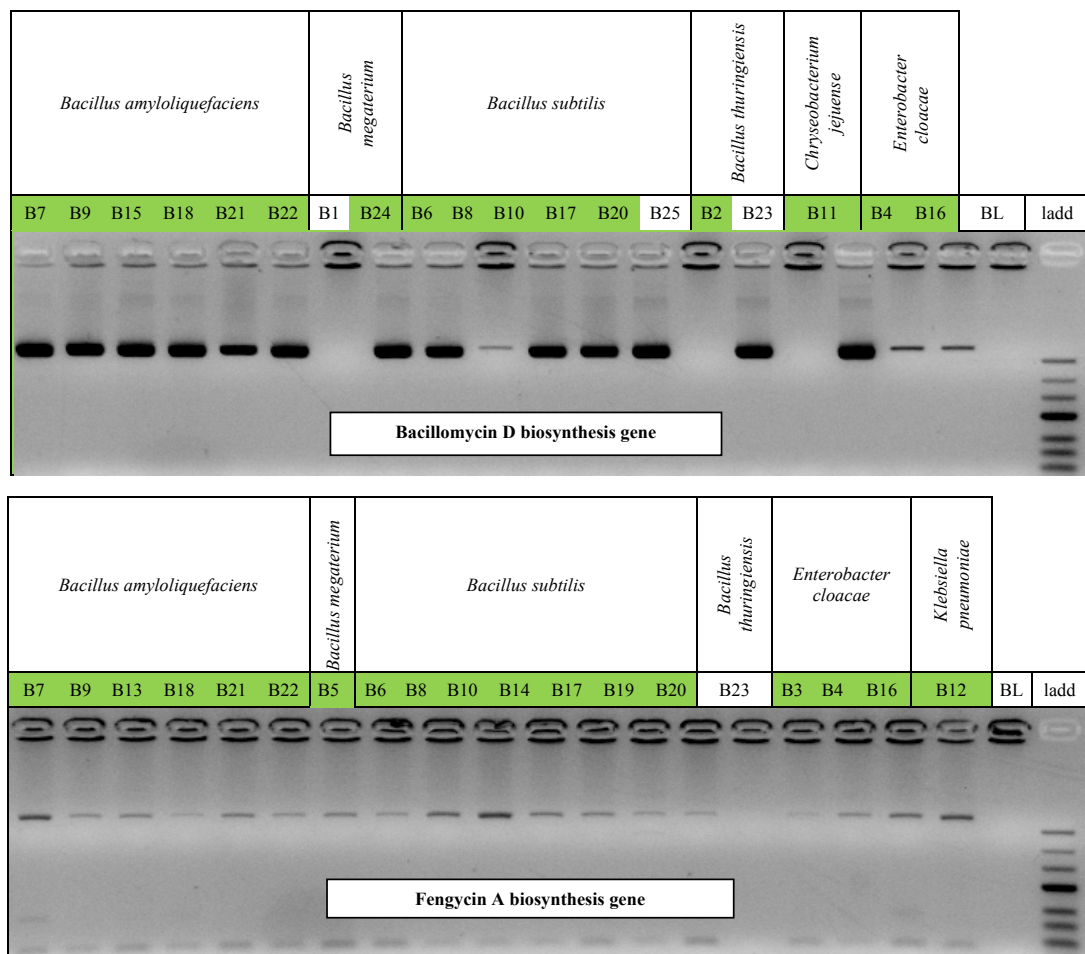


Figure 2: Results of PCR amplification of Bacillomycin D and Fengycin A biosynthesis genes in the 25 tomato-associated rhizobacterial isolates recovered from Tunisian rhizospheric soils. Lane BL: negative control; lane ladd: molecular weight markers (Ladder).

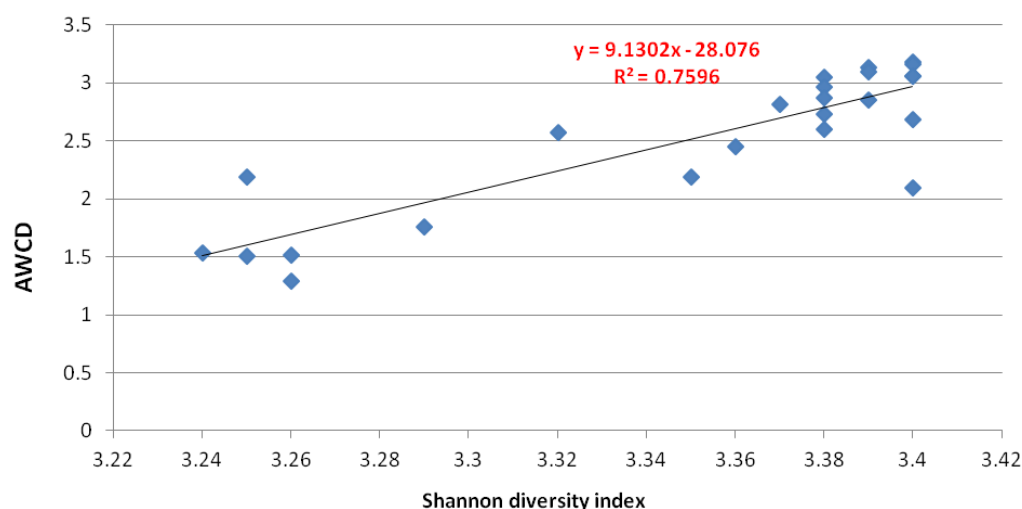


Figure 4: Correlation between average well color development (AWCD) and Shannon diversity index calculated from substrates degraded in Biolog® EcoPlates by the 25 tested tomato-rhizobacterial isolates (performed for means of three incubation durations).

surface where a great morphological diversity was recorded within the bacterial collection tested. Additionally, performed biochemical characterizations revealed the presence of great diversity within tomato-associated rhizobacteria based on Gram staining, levan activity, catalase activity, and oxidase activity.

Identification of biocontrol agents may be performed using biological and molecular methods. The 16S rRNA sequencing is widely used as an alternative method to identify microbial microorganisms. In the present study, the 25 isolates were subjected to 16S rRNA sequences analysis for phylogenetic comparisons. The obtained results revealed that the collected isolates belonged to different genera but, in some cases, the sequences obtained were very similar to each other and did not allow distinction of isolates at the species level especially within *Bacillus* group. Similarly, Chen and Tsen [40] failed in discriminating between species of *Bacillus* using 16S rRNA sequences analysis only. Also, González et al. [41] reported that analysis based on pair wise alignment of 16S rDNA sequences solely showed limited variations and sequence similarities between isolates and strain types were frequently encountered. In the same way, Hutsebaut et al. [42] and 43 Maughan and van der Auwera [43] indicated that the 16S rRNA gene sequences of species within the *Bacillus* group were highly conserved to enable easy and evident discrimination among species and subspecies. In the present study, analysis of 16S rDNA sequences showed limited variation where sequence similarities between isolates ranged between 96.5 and 99%. To overcome this constraint, protein-coding genes are reported to lead to greater genetic variation and were widely used as molecular tool for the classification of closely related species [44-46]. Some genes like *gyrA* and *rpoB* have been proposed to provide conclusive evidence on the evolutionary relationships of related taxa [47,48]. Unlike the high level of 16S rRNA gene sequence similarity noted within *Bacillus* group, sequence of the *rpoB* gene exhibited greater diversity and allowed identification of distinct species [41,49]. The sequencing of the 16S rRNA and *rpoB* genes of the 25 selected isolates revealed a species diversity where the tomato-associated isolates were classified into seven bacterial species namely *B. subtilis* (8 isolates), *B. amyloliquefaciens* (7 isolates), *B. megaterium* (3 isolates), *E. cloacae* (3 isolates), *B. thuringiensis* (2 isolates), *C. jejuense* (1 isolate), and *K. pneumoniae* (1 isolate).

Antibiotic production by bacterial antagonists is an essential component in the biological control of fungal phytopathogens and is characterized genetically through the detection of various antibiotic producing genes as shown in various studies [50-52]. In recent years, cyclic lipopeptide antibiotics have been reported to inhibit a wide range of plant pathogenic fungi [53,54]. In the present study, it was possible to associate the presence of antibiotic in the culture suspension of some strains with their corresponding biosynthetic genes. PCR primers used for the detection of multi-modular enzymes, the peptide synthetases involved in the biosynthesis of antifungal lipopeptides, showed the presence of fengycin A- and bacillomycin D-producing agents within this collection of rhizobacteria. The production of antibiotics by *Bacillus* spp. and their roles in suppression of plant pathogens are mentioned in many reviews [9,55]. *B. subtilis* and *B. thuringiensis* are previously reported to be subtilin, bacitracin, bacillin, subtenolin, and bacillomycin producers [56-58]. The production of cyclic lipopeptides is largely detected within *Bacillus* species but Mandal et al. [59] also demonstrated that *E. cloacae* can also produce different lipopeptide antibiotics like kurstakin, iturin, surfactin, and fengycin.

Chryseobacterium species were also commonly found in soil and water and their ability to suppress some soilborne diseases was reported [60-62]. Their mechanisms of action as biocontrol agents vary depending on species and isolates. In fact, *C. wanjuae* KJ9C8, effective in controlling *Phytophthora* blight of pepper, produced protease and Hydrogen cyanide (HCN) but not antibiotics [63], and according to Kim et al. [62], ability to produce antibiotics has not been reported in *Chryseobacterium* species. However, in the present study, *C. jejuense* B11 (KU158886) naturally associated to tomato was found to be a bacillomycin D-producing agent. This is, to our knowledge, the first report of presence of bacillomycin D encoding gene in *C. jejuense*. Interestingly, our *K. pneumoniae* B12 (KT921328) isolate was also able to produce fengycin A.

This collection of rhizobacterial isolates was also screened for PGPR properties and particularly siderophore and IAA production and phosphate solubilization. In fact, several microorganisms were found to be able to make insoluble soil phosphorous available to plants by solubilizing mineral phosphates through the production of organic acids or phosphatases. In the present study, 18 isolates out of the 25 tested,

belonging to *Bacillus*, *Enterobacter*, *Klebsiella* and *Chryseobacterium*, were shown able to solubilize inorganic forms of phosphorous. *Bacillus* strains were reported to have this capacity [64,65]. The phosphate solubilization ability recorded in some tomato-associated rhizobacteria in the present study is in line with other investigations performed using *Bacillus* [66], *Enterobacter* and *Klebsiella* species [64,67-69].

Siderophore production is another plant growth promoting (PGP) trait that may affect plant growth by binding to the available iron form (Fe³⁺) in the rhizosphere [70]. Through this process, iron becomes unavailable to plant pathogens; thus plants are protected from biotic stress. In the current investigation, 20 rhizobacterial isolates out of the 25 tested were shown able to produce siderophore. Rhizobacteria with siderophore-production ability were reported in various other previous studies as PGP agents [25,71].

IAA is one of the most important phytohormone involved in the regulation of plant growth. IAA production by PGPR can vary between and within species [72]. In the present study, among the 25 isolates tested, belonging to four genera, 19 were found to be IAA producers. Production of phytohormones (e.g. ethylene) by PGPR may affect plant growth and development, and can improve fruit quality as well [73,74].

Overall, based on PGP traits, *Bacillus* and *Pseudomonas* species are well known by their strong phosphorus solubilization activity and by their IAA- and siderophore- production abilities compared to the other rhizobacterial species [75]. Native *Bacillus* spp. isolates, used in the current study, showed PGP traits but also, interestingly, some *Enterobacter*, *Chryseobacterium* and *Klebsiella* isolates cumulated the three traits as they were found capable to produce IAA and siderophore and to solubilize inorganic phosphate. Previous investigations indicated that members of the genus *Chryseobacterium* are an important bacterial group associated with plants [76,77] and exhibiting plant-growth promoting activities [78]. Reports concerning the role of *Klebsiella* as PGPR are relatively rare [79]. Ahemad and Khan [80] demonstrated that *Klebsiella* sp. strain PS19 is able to solubilize inorganic phosphate and produce IAA and siderophores like DHBA (2,3-dihydroxybenzoic acid). Similarly, *K. oxytoca* Rs-5, isolated from a saline cotton field in Xinjiang Province, China, has also the ability to relieve salt stress, promote plant growth and produce IAA [81].

In previous studies, rhizobacteria were reported to have at least on PGP trait. For example, 216 bacterial strains, isolated from rice rhizospheric soils in Northern Thailand, have solubilized inorganic phosphate but only 18.05% of them are able to produce IAA where the best IAA producer was identified as *Klebsiella* SN 1.1 [82]. Also, according to Yasmin et al. [83], two isolates namely *Klebsiella* UPMSP9 and *Erwinia* UPMSP10 produce high IAA with L-tryptophan, solubilize phosphate, produce N in culture, resist to antibiotics but fail to produce siderophore. *K. oxytoca* is able to produce IAA, to solubilize phosphate and displays nitrogenase activity but six *K. pneumoniae* strains, recovered from wheat (var. Lokwan) rhizosphere produce only IAA [79].

Ability to use a sole carbon source, through the Biolog™ EcoPlate test, was widely explored as a reliable method for characterization of microbial communities based on their metabolic profiles [84]. Biolog system based physiological profiling generated a large number of characters and produced robust data and more realistic representation of relationships among strains of a given microbial collection. Data from this study showed that isolates, with similar profiles and being closest, were grouped together. Dawson et al. [85] reported that the metabolic profiling analysis allowed samples to be represented on scatter plots of two or more axes. This analysis is considered to be a highly effective

method for differentiating among and within species groups through cluster analysis. In the current study, variable metabolic profiles were found within the rhizobacteria collection tested as indicated by the variations recorded in AWCD values and Shannon indexes. After direct incubation of rhizobacteria isolates in Biolog EcoPlates, results revealed a great diversity as determined through the well color change to violet, permitting colorimetric determination of respiration increase occurring when bacterial cells are oxidizing a carbon source. Liao and Xie [86] indicated that color development seems to mainly reflect species metabolic activity and the ability of a given bacterial community to utilize substrates. Campbell et al. [87] showed that, although the use of environmentally relevant substrates to be beneficial, these substrates would only be useful if their use resulted in the differentiation between samples. Indeed, it can be concluded from the current the study the metabolic profiles may be a useful tool for classifying the soil microbial communities on ecological basis using their functional characteristics (single-use of carbon sources).

Conclusion

The present study was undertaken in order to isolate and identify tomato-associated rhizobacteria from various tomato-producing sites and growing systems and to perform morphological, biochemical, metabolic and molecular characterization for the 25 most effective ones in suppressing growth of *S. sclerotiorum* and *R. solani* by more than 45%.

The current investigation provided strong evidence that tomato rhizosphere was populated by a numerous and a diverse array of rhizobacteria exhibiting a great morphological and biochemical diversity. These 25 isolates were classified into seven species, based on sequencing of 16S rRNA and *rpoB* genes, which were *B. amyloliquefaciens*, *B. megaterium*, *B. subtilis*, *E. cloacae*, *C. jejuense*, and *K. pneumoniae*. These isolates exhibited a large metabolic activity and were shown able to metabolize a wide range of carbon sources with the increase of the incubation duration. Furthermore, based on their metabolic profiles obtained using Biolog system, the selected isolates were grouped into eight major clusters at each incubation duration (24, 48 and 120 h of incubation) and their AWCD was found to be correlated to Shannon diversity index.

Screening of their ability to synthesize plant growth-promoting and antifungal compounds revealed that the majority of isolates were able to produce siderophore, to solubilize phosphate and to synthesize IAA and that interestingly, some isolates cumulated the three plant growth promoting traits. Moreover, when screened for their potential to produce lipopeptide antibiotics, PCR amplification of genes encoding fengycin A and bacillomycin D biosynthesis revealed the presence of these genes in 18 and 16 isolates, respectively. Thus, this study clearly demonstrated that tomato rhizospheric soils harbor a diversity of beneficial bacteria which may be promising biocontrol agents due to their interesting metabolic activity, their capacity to produce lipopeptide antibiotics and their interesting antifungal potential displayed toward both target fungi. Moreover, their ability to produce plant growth-promoting compounds indicated that they may exhibit a bio-fertilizing action. Future investigations will be focused on their ability to suppress root and crown rots caused by *R. solani* and to enhance growth of tomato plants.

Acknowledgments

This work was funded by the Ministry of Higher Education Scientific Research in Tunisia through the budget assigned to UR13AGR09-Integrated Horticultural Production the Tunisian Centre-East, the Regional Centre of Research on Horticulture and Organic Agriculture (CRRHAB) of Chott Mariem, and INRA

Bordeaux-France through the budget allocated to SAVE UMR. Authors thank the research teams of UMR SAVE / INRA Bordeaux-France and CFBP / INRA Anger-Nante team for their hospitality, their guidance and support.

References

- Pastor N, Carlier E, Andrés J, Rosas SB, Rovera M (2012) Characterization of rhizosphere bacteria for control of phytopathogenic fungi of tomato. *J Environ Manage* 95 Suppl: S332-337.
- Hibar K, Daami-Remadi M, Hamada W, El Mahjoub M (2006) Biofungicides as an alternative for tomato *Fusarium* crown and root rot control. *Tunisian J Plant Prot* 1: 19-29.
- Jabnoun-Khiareddine H, Daami-Remadi M, Ayed F, El Mahjoub M (2009) Biological control of tomato Verticillium wilt by using indigenous *Trichoderma* spp. In: Daami-Remadi M (Ed) *Tunisian Plant Science and Biotechnology I*. Afr J Plant Sci Biotech 3: 26-36.
- Jabnoun-Khiareddine H, Abdallah RAB, El-Mohamedy RSR, Abdel-Kareem F, Gueddes-Chahed M, et al. (2016) Comparative efficacy of potassium salts against soil-borne and air-borne fungi and their ability to suppress tomato wilt and fruit rots. *J Microb Biochem Technol* 8: 45-55.
- Abdallah RAB, Tlili MS, Nefzi A, Jabnoun-Khiareddine H, Daami-Remadi M (2016) Biocontrol of Fusarium wilt and growth promotion of tomato plants using endophytic bacteria isolated from *Nicotiana glauca* organs. *Biol Control* 97: 80-88.
- Jiskani MM, Pathan MA, Wagan KH, Imran M, Abro H (2007) Studies on the control of tomato damping of disease caused by *Rhizoctonia solani* Kühn. *Pak J Bot* 39: 2749-2754.
- Arora NK, Khare E, Oh H, Kang SC, Maheshwari DK (2008) Diverse mechanisms adopted by fluorescent *Pseudomonas* PGC₂ during the inhibition of *Rhizoctonia solani* and *Phytophthora capsici*. *World J Microbiol Biotechnol* 24: 581-585.
- Zachow C, Grosch R, Berg G (2011) Impact of biotic and a-biotic parameters on structure and function of microbial communities living on sclerotia of the soil-borne pathogenic fungus *Rhizoctonia solani*. *Appl Soil Ecol* 48: 193-200.
- Singh JS, Pandey VC, Singh DP (2011) Efficient soil microorganisms: A new dimension for sustainable agriculture and environmental development. *Agric Ecosys Environ* 140: 339-353.
- De Curtis F, Lima G, Vitullo D, De Cicco V (2010) Biocontrol of *Rhizoctonia solani* and *Sclerotium rolsii* on tomato by delivering antagonistic bacteria through a drip irrigation system. *Crop Prot* 29: 663-670.
- Kita N, Ohya T, Uekusa H, Nomura K, Manago M, et al. (2005) Biological control of damping-off of tomato seedlings and cucumber Phomopsis root rot by *Bacillus subtilis* RB14-C. *Japan Agric Res Quart* 39: 109-114.
- Cazorla FM, Romero D, Perez-Garcia A, Lugtenberg BJJ, de Vicente A, et al. (2007) Isolation and characterization of antagonistic *Bacillus subtilis* strains from the avocado rhizosphere displaying biocontrol activity. *J Appl Microbiol* 103: 1950-1959.
- Taheri P, Tarighi S (2012) The role of pathogenesis-related proteins in the tomato-*Rhizoctonia solani* interaction. *Journal of Botany* p: 6.
- Blazier SR, Conway KE (2004) Characterization of *Rhizoctonia solani* isolates associated with patch diseases on turfgrass. *Proc Okla Acad Sci* 8: 41-45.
- Yang J, Kloepper JW, Ryu CM (2009) Rhizosphere bacteria help plants tolerate abiotic stress. *Trends Plant Sci* 14: 1-4.
- Joshi P, Bhatt AB (2011) Diversity and function of plant growth promoting rhizobacteria associated with wheat rhizosphere in North Himalayan region. *Int J Environ Sci* 1: 1135-1143.
- Arias AA, Ongena M, Halimi B, Lara Y, Brans A, et al. (2009) *Bacillus amyloliquefaciens* GA1 as a source of potent antibiotics and other secondary metabolites for biocontrol of plant pathogens. *Microb Cell Fact* 8: 63-70.
- Lugtenberg B, Kamilova F (2009) Plant-growth-promoting rhizobacteria. *Annu Rev Microbiol* 63: 541-556.
- Ahemad M, Kibret M (2014) Mechanisms and applications of plant growth promoting rhizobacteria: Current perspective. *Journal of King Saud University - Science* 26: 1-20.
- Prashar P, Kapoor N, Sachdeva S (2013) Isolation and characterization of *Bacillus* sp. with in-vitro antagonistic activity against *Fusarium oxysporum* from rhizosphere of tomato. *J Agric Sci Technol* 15: 1501-1512.
- Patel M, Sheth U, Hajela P, Joshi B, Animasaun DA (2014) Isolation and diversity analysis of rhizobacteria from sugarcane and its biocontrol potential against *Rhizoctonia solani* a common plant pathogen. *Int J Curr Microbiol App Sci* 3: 69-76.
- Agrawal KDP, Agrawal S (2013) Characterization of *Bacillus* sp. strains isolated from rhizosphere of tomato plants (*Lycopersicon esculentum*) for their use as potential plant growth promoting rhizobacteria. *Int J Curr Microbiol App Sci* 2: 406-417.
- Shobha G, Kumudini BS (2012) Antagonistic effect of the newly isolated PGPR *Bacillus* spp. on *Fusarium oxysporum*. *Int J Appl Sci Eng Res* 1: 463-474.
- Venkadesaperumal G, Amaesan N, Kumar K (2015) Plant growth promoting capability and genetic diversity of bacteria isolated from mud volcano and lime cave of Andaman and Nicobar Islands. *Braz J Microbiol* 45: 1271-1281.
- Ghodsalavi B, Ahmadzadeh M, Soleimani M, Madloo PB, Taghizad-Farid R (2013) Isolation and characterization of rhizobacteria and their effects on root extracts of *Valeriana officinalis*. *Aust J Crop Sci* 7: 338-344.
- Mishra VK, Kumar A (2015) Biosynthesis of indole-3-acetic acid by plant growth promoting rhizobacteria, *Klebsiella pneumonia*, *Bacillus amyloliquefaciens* and *Bacillus subtilis*. *Afr J Microbiol Res* 9: 1139-1149.
- Nawangsih AA, Aditya R, Tjahjono B, Negishi H, Suyama K (2012) Bio-efficacy and characterization of plant growth promoting bacteria to control the bacterial wilt disease of peanut in Indonesia. *ISSAAS Journal* 18: 185-192.
- Renault D, Vallance J, Déniel F, Wery N, Godon JJ, et al. (2012) Diversity of bacterial communities that colonize the filter units used for controlling plant pathogens in soilless cultures. *Microb Ecol* 63: 170-187.
- Gomez E, Garland J, Conti M (2004) Reproducibility in the response of soil bacterial community-level physiological profiles from a land use intensification gradient. *Appl Soil Ecol* 26: 21-30.
- Garland JL, Mills AL (1991) Classification and characterization of heterotrophic microbial communities on the basis of patterns of community-level sole-carbon-source utilization. *Appl Environ Microbiol* 57: 2351-2359.
- Chojniak J, Wasilkowski D, Plaza G, Mrozik A, Brigmon R (2015) Application of biologic microarrays techniques for characterization of functional diversity of microbial community in phenolic-contaminated water. *Int J Environ Res* 9: 785-794.
- Grove JA, Kautola H, Javadpour S, Young MM, Anderson WA (2004) Assessment of changes in the microorganism community in a biofilter. *Biochem Eng J* 18: 111-114.
- De Clerck E, De Vos P (2004) Genotypic diversity among *Bacillus licheniformis* strains from various sources. *FEMS Microbiol Lett* 231: 91-98.
- Tamura K, Dudley J, Nei M, Kumar S (2007) MEGA4: Molecular Evolutionary Genetics Analysis (MEGA) software version 4.0. *Mol Biol Evol* 24: 1596-1599.
- Harish S, Kavino M, Kumar N, Balasubramanian P, Samiyappan R (2009) Induction of defense-related proteins by mixtures of plant growth promoting endophytic bacteria against *Banana Bunchy Top Virus*. *Biol Control* 51: 16-25.
- Yang MM, Mavrodi DV, Mavrodi OV, Bonsall RF, Parejko JA, et al. (2011) Biological control of take-all by fluorescent *Pseudomonas* spp. from Chinese wheat fields. *Phytopathology* 101: 1481-1491.
- Maleki M, Mostafae S, Mokhtarnejad L, Farzaneh M (2010) Characterization of *Pseudomonas fluorescens* strain CV6 isolated from cucumber rhizosphere in varamin as a potential biocontrol agent. *Aust J Crop Sci* 4: 676-683.
- Naveed M, Mubeen S, Khan S, Ahmed I, Khalid N, et al. (2014) Identification and characterization of rhizospheric microbial diversity by 16S ribosomal RNA gene sequencing. *Braz J Microbiol* 45: 985-993.
- Kamalakkannan A, Mohan L, Harish S, Radjacommar R, Amutha G, et al. (2004) Biological agents induce disease resistance in *Phyllanthus niruri* Linn against damping-off disease caused by *Rhizoctonia solani*. *Phytopathol Medit* 43: 187-194.
- Chen ML, Tsen HY (2002) Discrimination of *Bacillus cereus* and *Bacillus thuringiensis* with 16S rRNA and gyrB gene based PCR primers and sequencing of their annealing sites. *J Appl Microbiol* 92: 912-919.
- González MJ, Gorgoroso F, Reginensi SM, Olivera JA, Bermúdez J (2013) Polyphasic identification of closely related *Bacillus subtilis* and *Bacillus amyloliquefaciens* isolated from dairy farms and milk powder. *J Microbiol Biotechnol Food Sci* 2: 2326-2331.

42. Hutsebaut D, Vandroemme J, Heyrman J, Dawyndt P, Vandenabeele P, et al. (2006) Raman microspectroscopy as an identification tool within the phylogenetically homogeneous '*Bacillus subtilis*' group. Syst Appl Microbiol 29: 650-660.
43. Maughan H, Van der Auwera G (2011) *Bacillus* taxonomy in the genomic era finds phenotypes to be essential though often misleading. Infect Genet Evol 11: 789-797.
44. Bavykin SG, Lysov YP, Zakhariev V, Kelly JJ, Jackman J, et al. (2004) Use of 16S rRNA, 23S rRNA, and gyrB gene sequence analysis to determine phylogenetic relationships of *Bacillus cereus* group microorganisms. J Clin Microbiol 42: 3711-3730.
45. Konstantinidis KT, Tiedje JM (2005) Towards a genome-based taxonomy for prokaryotes. J Bacteriol 187: 6258-6264.
46. Zeigler DR (2005) Application of a recN sequence similarity analysis to the identification of species within the bacterial genus *Geobacillus*. Int J Syst Evol Microbiol 55: 1171-1179.
47. Ko KS, Kim JM, Kim JW, Jung BY, Kim W, et al. (2003) Identification of *Bacillus anthracis* by rpoB sequence analysis and multiplex PCR. J Clin Microbiol 41: 2908-2914.
48. Wang K, Kang L, Anand A, Lazarovits G, Mysore KS (2007) Monitoring in planta bacterial infection at both cellular and whole-plant levels using the green fluorescent protein variant GFPuv. New Phytol 174: 212-223.
49. Meintanis C, Chalkou KI, Kormas KA, Lymerpoulou DS, Katsifas EA, et al. (2008) Application of rpoB sequence similarity analysis, REP-PCR and BOX-PCR for the differentiation of species within the genus *Geobacillus*. Lett Appl Microbiol 46: 395-401.
50. Haas D, Keel C (2003) Regulation of antibiotic production in root-colonizing *Pseudomonas* spp. and relevance for biological control of plant disease. Annu Rev Phytopathol 41: 117-153.
51. Stein T (2005) *Bacillus subtilis* antibiotics: structures, syntheses and specific functions. Mol Microbiol 56: 845-857.
52. Mavrodi DV, Blankenfeldt W, Thomashow LS (2006) Phenazine compounds in fluorescent *Pseudomonas* spp. biosynthesis and regulation. Annu Rev Phytopathol 44: 417-445.
53. Nagorska K, Bikowski M, Obuchowski, M (2007) Multicellular behaviour and production of a wide variety of toxic substances support usage of *Bacillus subtilis* as a powerful biocontrol agent. Acta Biochim Pol 54: 495-508.
54. Ongena M, Jacques P (2008) *Bacillus* lipopeptides: versatile weapons for plant disease biocontrol. Trends Microbiol 16: 115-125.
55. Yuan J, Raza W, Shen Q, Huang Q (2012) Antifungal activity of *Bacillus amyloliquefaciens* NJN-6 volatile compounds against *Fusarium oxysporum* f. sp. *cubense*. Appl Environ Microbiol 78: 5942-5944.
56. Montealegre JR, Reys R, Perez LM, Herrera R, Silva P, et al. (2003) Selection of bioantagonistic bacteria to be used in biological control of *Rhizoctonia solani* in tomato. Elect J Biotechnol 6: 115-127.
57. From C, Pukall R, Schumann P, Hormazábal V, Granum PE (2005) Toxin-producing ability among *Bacillus* spp. outside the *Bacillus cereus* group. Appl Environ Microbiol 71: 1178-1183.
58. Killani AS, Abaidoo RC, Akintokun AK, Abiala MA (2011) Antagonistic effect of indigenous *Bacillus subtilis* on root-/soil-borne fungal pathogens of cowpea. Researcher 3: 11-18.
59. Mandal SM, Sharma S, Pinnaka AK, Kumari A, Korpole S (2013) Isolation and characterization of diverse antimicrobial lipopeptides produced by *Citrobacter* and *Enterobacter*. BMC Microbiol 13: 152.
60. Krause MS, Madden LV, Hoitink HA (2001) Effect of potting mix microbial carrying capacity on biological control of rhizoctonia damping-off of radish and rhizoctonia crown and root rot of poinsettia. Phytopathology 91: 1116-1123.
61. McSpadden Gardener BB, Weller DM (2001) Changes in populations of rhizosphere bacteria associated with take-all disease of wheat. Appl Environ Microbiol 67: 4414-4425.
62. Kim HS, Sang MK, Jung HW, Jeun YC, Myung IS, et al. (2012) Identification and characterization of *Chryseobacterium wanjuae* strain KJ9C8 as a biocontrol agent of Phytophthora blight of pepper. Crop Prot 32: 129-137.
63. Park MS, Jung SR, Lee KH, Lee MS, Do JO, et al. (2006) *Chryseobacterium soldanellicola* sp. nov. and *Chryseobacterium taeanense* sp. nov., isolated from roots of sand-dune plants. Int J Syst Evol Microbiol 56: 433-438.
64. Kumar A, Kumar A, Devi S, Patil S, Payal CH, et al. (2012) Isolation, screening and characterization of bacteria from rhizospheric soils for different plant growth promotion (PGP) activities: an in vitro study. Recent Res Sci Technol 4: 1-5.
65. Ajillogba CF, Babalola OO, Ahmad F (2013) Antagonistic effects of *Bacillus* species in biocontrol of tomato *Fusarium* wilt. Ethno Med 7: 205-216.
66. Calvo P, Ormeño-Orrillo E, Martínez-Romero E, Zúñiga D (2010) Characterization of *Bacillus* isolates of potato rhizosphere from andean soils of Peru and their potential PGPR characteristics. Braz J Microbiol 41: 899-906.
67. Chatli AS, Beri V, Sidhu BS (2008) Isolation and characterization of phosphate solubilizing microorganisms from the cold desert habitat of *Salix alba* Linn. in trans Himalayan region of Himachal Pradesh. Indian J Microbiol 48: 267-273.
68. Khan AA, Jilani G, Akhtar MS, Naqvi SMS, Rasheed M (2009) Phosphorus solubilizing bacteria: Occurrence, mechanisms and their role in crop production. J Agric Biol Sci 1: 48-58.
69. Singh AV, Chandra R, Goel R (2013) Phosphate solubilization by *Chryseobacterium* sp. And their combined effect with N and P fertilizers on plant growth promotion. Arch Agron Soil Sci 59: 641-651.
70. Siddiqui ZA (2005) PGPR: prospective biocontrol agents of plant pathogens. Pages 111-142. In: PGPR: Biocontrol and Biofertilization, Springer, Netherlands.
71. Raval AA, Desai PB (2012) Rhizobacteria from rhizosphere of sunflower (*Helianthus annuus* L.) and their effect on plant growth. Res J Biol Sci 1: 58-61.
72. Mirza MS, Ahmad W, Latif F, Haurat J, Bally R, et al. (2001) Isolation, partial characterization, and the effect of plant growth-promoting bacteria (PGPB) on micro-propagated sugarcane in vitro. Plant and Soil 237: 47-54.
73. Violante HGM, Portugal VO (2007) Alteration of tomato fruit quality by root inoculation with plant growth-promoting rhizobacteria (PGPR): *Bacillus subtilis* BEB-13bs. Scientia Horticulturae 113: 103-106.
74. Lucas-Garcia JA, Probanza A, Ramos B, Ruiz-Palomino M, Gutierrez Manero FJ (2004) Effect of inoculation of *Bacillus licheniformis* on tomato and pepper. Agronomie 24: 169-176.
75. Gechemba OR, Budambula NLM, Makonde HM, Julius M, Matiru VN (2015) Potentially beneficial rhizobacteria associated with banana plants in Juja, Kenya. J Bio Env Sci 7: 181-188.
76. Anderson M, Habiger J (2012) Characterization and identification of productivity-associated rhizobacteria in wheat. Appl Environ Microbiol 78: 4434-4446.
77. Brown SD, Utturkar SM, Klingeman DM, Johnson CM, Martin SL, et al. (2012) Twenty-one genome sequences from *Pseudomonas* species and 19 genome sequences from diverse bacteria isolated from the rhizosphere and endosphere of *Populus deltoides*. J Bacteriol 194: 5991-5993.
78. Dardanelli MS, Manyani H, González-Barroso S, Rodríguez-Carvajal MA, Gil-Serrano AM, et al. (2010) Effect of the presence of the plant growth promoting rhizobacterium (PGPR) *Chryseobacterium balustinum* Aur9 and salt stress in the pattern of flavoids exuded by soybean roots. Plant Soil 328: 483-493.
79. Sachdev DP, Chaudhari HG, Kasture VM, Dhavale DP, Chopade BA (2009) Isolation and characterization of indole acetic acid (IAA) producing *Klebsiella pneumoniae* strains from rhizosphere of wheat (*Triticum aestivum*) and their effect on plant growth. Indian J Exp Bot 47: 993-1000.
80. Ahemad M, Khan MS (2011) Effects of insecticides on plant-growth-promoting activities of phosphate solubilizing rhizobacterium *Klebsiella* sp. strain PS19. Pestic Biochem Phys 100: 51-56.
81. Yue HT, Mo WP, Zheng YY, Li CH, Li H (2007) The salt stress relief and growth promotion effect of Rs-5 on cotton. Plant Soil 297: 139-145.
82. Chaiham M, Lumyong S (2011) Screening and optimization of indole-3-acetic acid production and phosphate solubilization from rhizobacteria aimed at improving plant growth. Curr Microbiol 62: 173-181.
83. Yasmin F, Othman R, Sijam K, Saad MS (2009) Characterization of beneficial properties of plant growth-promoting rhizobacteria isolated from sweet potato rhizosphere. Afr J Microbiol Res 3: 815-821.
84. Di Salvo L, De Salamone IG (2012) Evaluation of soil-microbial communities by their CLPP. Standardization of a laboratory technique to replace commercial available microplates. Ecologia Austral 22: 129-136.

85. Dawson SL, Fry JC, Dancer BN (2002) A comparative evaluation of five typing techniques for determining the diversity of fluorescent pseudomonads. *J Microbiol Meth* 50: 9-22.
86. Liao M, Xie XM (2007) Effect of heavy metals on substrate utilization pattern, biomass, and activity of microbial communities in a reclaimed mining wasteland of red soil area. *Ecotoxicol Environ Safety* 66: 217-223.
87. Campbell CD, Grayston SJ, Hirst DJ (1997) Use of rhizosphere carbon sources in sole carbon source tests to discriminate soil microbial communities. *J Microbiol Meth* 30: 33-41.

Citation: Abdeljalil NOB, Vallance J, Gerbore J, Bruez E, Martins G, et al. (2016) Characterization of Tomato-associated Rhizobacteria Recovered from Various Tomato-growing Sites in Tunisia. *J Plant Pathol Microbiol* 7: 351. doi:[10.4172/2157-7471.1000351](https://doi.org/10.4172/2157-7471.1000351)

OMICS International: Publication Benefits & Features

Unique features:

- Increased global visibility of articles through worldwide distribution and indexing
- Showcasing recent research output in a timely and updated manner
- Special issues on the current trends of scientific research

Special features:

- 700+ Open Access Journals
- 50,000+ Editorial team
- Rapid review process
- Quality and quick editorial, review and publication processing
- Indexing at major indexing services
- Sharing Option: Social Networking Enabled
- Authors, Reviewers and Editors rewarded with online Scientific Credits
- Better discount for your subsequent articles

Submit your manuscript at: <http://www.omicsgroup.org/journals/submission>